



# Wood County Master Gardener Volunteers

## Wood County Events

**August 25**  
**Annual Pot Luck Picnic**  
**Lakes Golf Course Gardens**  
**Tours at 5:00 PM**  
**Short Program by Chris**  
**Landowski at 6:00 PM**  
**Dinner: 6:30 PM**  
**Business Meeting: 7:15 PM**  
**NOTE: EARLY TOUR**  
**START TIME**

Chris Landowski has assembled a program showing some of the gardens she maintains at Lake Arrowhead Golf Courses. The Lakes Course, the newest course at Lake Arrowhead, features full sun, part sun/part shade and woodland gardens each with different planting styles and a variety of flowers, both perennial and annual. Trees and shrubs are included as well as are ornamental grasses. The amazing fact is that until six years ago there wasn't a flower to be seen on this golf course. She'll tell you how she selects plant stock and what they do to control pests. A flyer for the Pot Luck is on page nine. Dinner in the pavilion, business meeting follows dinner.

**Driving Directions Lakes Course, Lake Arrowhead**

Drive south on Hwy.13 from WI Rapids to Rome. Pass Pritzl's Trading Post and drive approximately 1.1 mile until you come to the Rome Realty sign on corner of Apache Ave and Hwy 13 S. Turn right onto Apache Ave. and drive approximately two miles. These driving directions are similar to those for June's meeting. The

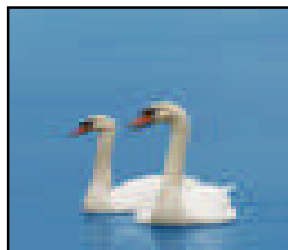
*Lakes Golf Course*

will be on the right side of Apache Ave. Turn right into the driveway and follow it to the far end of the parking lot where you will see the pavilion and some of the flower beds. Park and join the group in the pavilion. And don't forget to bring a guest!



**September 22**  
**TIME: TBA**  
**Swans and Ponds**  
**Joyce Fischer's**  
**10809 Lincoln Spencer Rd.**  
**Marshfield**

Joyce Fischer has invited us to her home for a program on Swans and Ponds. A Certified Master Gardener Volunteer for many years, Joyce also maintains her own business as a land-



scaper and garden maintenance specialist. Her vast experience makes her just the right person to speak to us about building and maintaining a private pond. She has populated her home pond with swans and she's willing to share the ins and outs of handling these graceful, beautiful but often temperamental birds. Join us for this great program.

## Inside this issue:

President's Message	2
News	3
July Minutes	4
Continuing Ed. Opportunities	6
September Garden	7
Storage Needs	5
Pot Luck	7

## Special Points of Interest:

**Fall Gardening Seminar page 9**

**Fall Plant Sale 3**

## UW Extension

University of Wisconsin, U.S Department of Agriculture and Wisconsin counties cooperating. UW-Extension provides equal opportunities in employment and programming including Title IX and ADA. Please make requests for reasonable accommodations to ensure equal access to educational programs as early as possible preceding the scheduled program, service or activity.

The Wood County Master Gardener Volunteer newsletter is designed to inform you about the Master Gardener and University Extension activities as well as educational articles. Please let us know if there are any subjects you would like covered in future newsletters.

Teri Lessig Matt Lippert



# From the President's Notebook

From the President's Notebook , , , ,

Thanks go out to everyone who participated in any way to make our 2015 garden walk successful...many new changes made the event fun, relaxing, educational and inspiring! Our next event is the annual potluck picnic. Open to members and their spouses; this event offers a chance to do more socializing plus taste wonderful dishes prepared by the WCMGV. This year we have a special tour of gardens created within a golf course setting; included are a variety of garden types designed by WCMGV Chris Landowski. Following the tour Chris will share a brief history of the gardens with us. If you have not signed up to attend the picnic it is not too late. See picnic flyer in this newsletter. Last year we had over 80 members and guests at the picnic held in Marshfield...the countdown is on for this year's attendance...can we count you in?

By the time you read this newsletter the project evaluations will most likely be completed. We plan to announce the results of these evaluations at the August WCMGV Tour/Picnic/Meeting.

Marshfield Plant Sale is September 19th and 20th. A completely different venue than the spring plant sale brings fall items. Dried natural materials are welcome as are plants from various "digs". Your extra perennials are most welcome! Handmade/designed scarecrows along with pumpkins are encouraged as our guest shoppers will be looking to select items for their fall decorating.

October 17...is our fall seminar...see the flyer on page nine for complete information on this educational event.

## Board of Directors - Openings for 2016

Have you ever wondered what the WCMGV Board does? Want to learn more about our organization? Want to be a part of the decision-making process? Want an alternative method of earning required hours in addition to project

maintenance? Have ideas and wish to share those with others? Consider one of the open positions for 2016. The board meets four times a year in the evening. If interested and/ or have questions contact Ruth Cline at 715-569-4202 and/or [stonegate@tznnet.com](mailto:stonegate@tznnet.com). Positions that will be opening up for 2016 include secretary and director I leave you with these thoughts;

*I perhaps owe having become a painter to flowers.*  
- Claude Monet

*There are no gardening mistakes, only experiments.*  
- Janet Kilburn Phillips

*I owe my love of nature, reading and horses  
to my grandfather.* - Ruth Cline

## ATTENTION MEMBERS. . . . . SEE PAGE 7

Please contact Joanne Wilkinson as soon as you receive this newsletter to let her know if you are going to attend the Annual Pot Luck on August 25 at the Lake Arrowhead Gardens. The RSVP on the poster was dated August 10th. We need to know how many attendees to prepare for. Thank you!

## WCMGV WEBSITE NEWS

Our new website is up and running. Check it out: [www.wood-county-master-gardeners.org](http://www.wood-county-master-gardeners.org)  
We have three people along with Teri able to add content and keep things updated. Chris Grimes, Peg Klinkhammer, and Karen Tlachac.

The Wood County Master Gardener Association is a non-profit organization with a mission to educate and share information with its members and the community alike. In addition, it is our charge to promote the UW Extension from which we are founded. We are a diverse group interested in the latest research-based horticultural information.

**Wisconsin Master Gardener Website**  
<http://wimastergardener.org/>  
**Wood County Extension Website**  
<http://wood.uwex.edu>

## 2015 MG Board of Directors

**President** - Ruth Cline  
[stonegate@tznnet.com](mailto:stonegate@tznnet.com)  
715-569-4202

**Vice President** - Julie Carlsen  
[carlsens\\_@hotmail.com](mailto:carlsens_@hotmail.com)  
715-886-4466

**Secretary** - Famia Marx  
[mapallc@tds.net](mailto:mapallc@tds.net)  
715-652-2405

**Treasurer** Barb Herreid  
[bherreid@wctc.net](mailto:bherreid@wctc.net)  
715-325-2075

**Director** - Lynn Bushmaker  
[lmbushma@wctc.net](mailto:lmbushma@wctc.net)  
715-435-4386

**Director** - Mary Czaja  
[dickandmary@tds.net](mailto:dickandmary@tds.net)  
715-884-6516

**Director** - Jan Sabin  
[sabinje@yahoo.com](mailto:sabinje@yahoo.com)  
715-459-6057

**Director** - Karen Houdek  
[khoudek842@aol.com](mailto:khoudek842@aol.com)  
513-823-1312

**Communications Rep.** - Chris Grimes  
[chgrimes@wctc.net](mailto:chgrimes@wctc.net)  
715-424-2878

**Historian No.** - Roxanne Tomkowiak  
[roxanne.tomkowiak@figis.com](mailto:roxanne.tomkowiak@figis.com)  
715-676-2299

**Historian So.** - Michaelen Erickson  
[GaryMicky@charter.net](mailto:GaryMicky@charter.net)  
715-435-3616  
**Immediate Past President and WIMGA Rep.** Barb Herreid  
[bherreid@wctc.net](mailto:bherreid@wctc.net)  
715-325-2075

### Newsletter & Graphic Arts

Chris Landowski  
[mclandow@gmail.com](mailto:mclandow@gmail.com)  
620 Ten Mile Ave  
Nekoosa, WI 54457  
715-886-1978  
Please send newsletter bits and info by the 10th of the month for publication.

---

## News From Teri

### “Clean Hands” Alternatives to Digging Youth Education

Before the July meeting, several interested members got together to brainstorm ideas about youth horticulture education. The possibilities are endless, but we narrowed down to a few to focus on.

We already have a fabulous committee that focuses on the Children’s Festival in Wisconsin Rapids after transitioning from Ag Day. Did you know there is also a Children’s Festival in Marshfield? This is an opportunity to duplicate the effort the Wisconsin Rapids-based team puts together in Marshfield.

Another possibility is assisting in schools during horticulture-related topics. We are not necessarily talking about teaching a class, but perhaps being an extra set of hands when students are transplanting in the greenhouse, or even helping coordinate students and their families at a school garden during the summer months when school is not in session. The key is going to be contacting several schools to see what would be welcome and helpful to them.

We also discussed programming at libraries. Several of our projects are already at the local library and they are always interested in any type of education program to engage the youth. Many of these programs could also be duplicated throughout the county.

I realize that the time we met before the July meeting may not have been convenient for everyone. If you are interested in any type of youth education in horticulture, please let Teri know. Expect to see more information about these activities as we explore the possibilities in detail.

### Master Gardener Training Fall 2015

I hate the thought of summer coming to an end so soon, but am excited to announce another Master Gardener Training class for fall of 2015. The Master Gardener program is a volunteer program designed and sponsored by University of Wisconsin Cooperative Extension to educate community members interested in gardening who, in turn, volunteer each year to further educate the public and provide community support. The first step in becoming a certified Master Gardener Volunteer is to attend the Level 1 training course. In Wood County, we try to hold one Level 1 training class per year, alternating between the Wisconsin Rapids area and the Marshfield area. The 2015 training is going to be in Marshfield. Over the years, Level 1 training classes have been evolving to incorporate more hands-on learning activities rather than just lecture. We are also using internet technology for better access to learning modules and state specialists located throughout Wisconsin. Participants must be able to access these modules on their own time. The classes will be held on Tuesday evenings, beginning in September and will conclude in November. The Tuesday classes will be from 6-9pm held in the auditorium at Marshfield Ag Research Station. There will be 36 hours of training in all horticultural-related subjects including fruits, vegetables, perennials, annuals, trees and shrubs, landscape design, weeds, insects, diseases, soil and plant health, composting, wildlife management, natives and invasives, houseplants, plant propagation and lawn

care along with volunteer training. We always have live presenters during the class hours, and we will have distance education incorporated as well — for off-site learning opportunities.

The Wood County Master Gardener Association is a strong group with wonderful members passionate about gardening, community service, and education. We have many projects and activities throughout Wood County and surrounding areas that help enrich the beauty of our communities and enlighten our community members. Once complete, each person is required to volunteer 24 hours of community service before they are awarded the status of Certified Master Gardener Volunteer. To maintain the certification, 24 hours of service is required each year along with 10 hours of continuing education. Most of our members achieve this amount without even having to think about it! After the Level 1 Training is complete, there are more opportunities for advanced Level 2 Trainings on specific topics. We have educational events at all of our monthly meetings along with garden tours and socialization with fellow members.

If you know of someone who may be interested in participating in the Level 1 Training and joining this dynamic group of volunteers, please tell them how to register with the Wood County Extension office. Our registration brochure is available online at the Wood County UWEX website (<http://wood.uwex.edu/>) or call 715-421-8440 and we can send you information. We also require the background check form to be sent in at the time of registration. The fee for the Level 1 training class is going to be \$135 per person and includes all training materials and handouts. Registration is open until August 27<sup>th</sup>. Classes will begin Tuesday, September 8<sup>th</sup>. You must be registered by August 27<sup>th</sup> to attend.

*Teri*

### Fall Plant Sale Information

The Fall Master Gardner Plant Sale in Marshfield is Sept. 19<sup>th</sup> and 20<sup>th</sup>. Set-up day is Friday, Sept. 18<sup>th</sup> from 10:00 am—4:00 pm. The plant sale is the same weekend as the Maple Fall Festival in Wildwood Park. We are asking WCMGV members to donate extra plants from their gardens, containers, dried materials and fall garden items like pumpkins and gourds. Please have each of the plants labeled. A picture of the plant in bloom will help to sell it.

We would like to try something new this year. Would you like to create a scarecrow? We will bring wood stakes to the August meeting to help make them. You can use them or create a scarecrow of any size. We will donate any that do not sell to area nursing homes or you can ask for them back. Please contact Mary Czaja (715-884-6516) if you need help digging or can volunteer in any way. Thank you.

---

**Wood County Master Gardener Volunteers  
General Membership Meeting 7:00PM  
Wood County Courthouse, July 28, 2015  
Wisconsin Rapids, WI  
One hour Continuing Education Credit**

**Meeting was called to order:** at 7:00 preceding an hour seminar on Monarch Butterflies.

- **Minutes were presented:** Jeanne Osgood moved to accept the minutes as amended, seconded by Jan Sabin; motion carried.
- **Financial report:** Presented by Barb Herreid, motion made to accept as presented by Mary Zahn, Seconded by Joanne Wilkinson; motion carried.

**Old Business:**

- **Garden Walk Update:** Barb thanked everyone that pulled together to make a successful walk. The committee is already in the planning stages for next year's walk. Barb requested that all tickets and monies for the garden walk be turned in as soon as possible. Attendance was down this year, whether it was because of the heat or the location, or the possibility that it was a new date is unknown at this time. Denise thanked everyone for the "Art in the Garden" donations and for working on the crafts. Next year's craft ideas include a feed bag shopping bag and walking sticks. A wrap-up meeting is planned for Thursday, July 30, 4:30 pm at McMillan Library. All were welcome to attend and provide input.
- **Recipe book:** Joanne Wilkinson announced the winner of the photo contest for the cover of the cook book; Denise Larson's photo is the winning photo. Everything is still on schedule for the cookbook to be done by next year.
- **Fall Seminar:** Will be held October 17 at UW Marshfield Campus with David Wanninger and Teri Lessig, presenters. Posters will be coming out at the August meeting (picnic).

**No other old business**

**New Business:**

- **Extension Update:** Teri announced that Level 1 training will be held in Marshfield this fall. Deadline for signing up is August 29. She also brought samples of cedar apple rust on some apple leaves, and both late and early tomato blight examples. If blight is found on tomato plants, do not compost these plants; put them in the main garbage. There was a question from the membership about the height of the grafted plants. Apparently they are growing quite tall.
- **Project Evaluations:** Jan Sabin informed everyone that project evaluations are coming up. Members are welcome to help; a sign-up sheet was passed around.
- **Marshfield Plant Sale:** Famia had a sign-up sheet on the table if anyone was interested in helping. There will be a meeting on August 6th for any members who might like to come. Posters were presented.
- **Project Leader Update/Information:** No remarks were made.
- **WCMGV Required Hours:** Teri brought extra time sheets if any were needed, with a reminder the 24 required volunteer hours and 10 hours of continuing education are due October 1.
- **Picnic:** Joanne Wilkinson had a sign-up sheet for members planning to attend the picnic; this will help get a head count of about how many people to plan for.

There was no other new business.

Motion to adjourn at 7:30pm made by Jan Sabin, seconded by Joanne Wilkinson, motion carried.

The next meeting will be August 25 following the Annual Pot Luck Picnic at Lakes Golf Course Gardens. Tours start at 5:00 p.m. followed by a short program by Chris Landowski. Dinner will be served at 6:30 p.m.

Respectfully Submitted

Famia Marx, Secretary

*Members Attending: Nancy Lee Alger, Shirley Anderson, Annette Bowden, Debbie Brown, Audrey Brundidge, Lynn Bushmaker, Julie Carlson, Bob Cline, Ruth Cline, Mary Czaja, Mike Datka, Debra DeByl, Roger Deglow, Karen Deglow, Michaelaeren Erickson, Cindy Federwitz, Joyce Fischer, Christine Griffith, Chris Grimes, Peg Harvey, Betty Havlik, Barb Herreid, Paula Klevene, Gail LaFontaine, Christine Landowski, Denise Larson, Leonore Look, Jane Maciejewski, Famia Marx, Ellen Mazurek, Judy Miller, Tammera Neumann, Kay O'Shasky, Jeanne Osgood, Debra Ostrowski, Tom Paul, Patricia Paulus, Karleen Remington, Jean Rockwood, Janet Sabin, Roberta Stolt, Connie Stout, Carol Tomke, Apollonia Virsnieks, Penn Wilkes, Joanne Wilkinson, Marleen Winters, Mary Zahn. Guests present: Barb Zeitler, Jerry Pancher, Ruby Thomas and Roberta Stolt. Teri Lessig was also in attendance.*



---

# Announcements

## Looking for Storage Solutions

We need your help. Over the years, the WCMGV has accumulated a number of assets that are used throughout the year in support of our projects and fundraisers. These include such things as coffee urns, thirteen six-foot tables, plant sale signs, signs and banners for the Garden Walk, canopies and other assorted items.

A few items are stored at the courthouse but the area designated for us is very small. Most of the larger items are stored in members' homes or garages. Keeping track of where each item is currently located has sometimes become a challenge.

The board of directors would like to explore having a centralized storage space. Because we are a non-profit, we'd like to keep the expense of this to a minimum so that our funds are directly used for educational and community projects throughout the county. We're asking for your suggestions of possible alternatives. Perhaps you know of a business that might want to donate space for us or donate funds to us to obtain a storage space. Maybe you belong to another organization that has faced a similar situation and can share how it was resolved. Do you know of an owner of storage units who offers low rates to non-profits or who would be willing to give us a highly discounted rate? We're open to any and all suggestions! Please contact Barb Herreid at [bherreid@wctc.net](mailto:bherreid@wctc.net) or 715-325-2075.

Thank you!

## Ash Borer Update

The emerald ash borer is a voracious Asian insect that has spread to 25 states since 2002, when first noticed in Michigan. It reached Wisconsin in 2008.

The invader has been found in 35 counties covering the southern half of Wisconsin. Managers of state parks infested with the destructive beetle have felled thousands of ash trees in the last three years to help reduce the danger of weakened trees toppling. In Baraboo, Devil's Lake State Park supervisor Steve Schmelzer said they purchased equipment to inject about 75 tree trunks with pesticide to help preserve the shade and beauty of ash trees in prominent areas — including one estimated to be 237 years old. The City of Stevens Point is also preparing to inject trees. "If you wait to take action until it is here, then the survival rate of the tree is much lower," Schmelzer said. By the time the first emerald ash borer was found in a Wisconsin state park near the Illinois border in 2012, it was already too late to consider any remedy but the chainsaw, officials said.

Andrea Diss-Torrance, of the Department of Natural Resources' invasive species program, said the equipment from Devil's Lake may be shared with other parks, such as Perrot State Park on the Mississippi River, which hired a contractor to treat some trees.

Schmelzer said they also plan to cut 75 trees considered less valuable or that have been weakened by other factors. The DNR has released parasitic wasps at 12 state and local parks in an IPM (integrated pest management) effort.

---

## Continuing Education Opportunities

**September 22-25, 2015**

**International Master Gardener Conference**

**Council Bluffs, Iowa**

*Cultural Horizons in the Heartland*, hosted by the Iowa and Nebraska MG Programs. For more information see the [2015 IMGc Facebook page](#).

**Sept 27 - Oct 1, 2015**

**Gardens of New York City**

**Tour to NYC**

Join Olbrich Botanical Garden's Director of Horticulture, Jeff Epping, for a five-day tour of delightful gardens in and around New York City, including Wave Hill in the Bronx, a spectacular 28-acre public garden overlooking the Hudson River; New York Botanical Garden, a National Historic Landmark with one of the world's greatest collection of flora; Central Park Conservatory Gardens; and High Line Park. For more information download the [brochure](#) (PDF). Contact Burkhalter Travel at (608) 833-1525 to make your reservation.

**Oct 2, 2015**

**Invasive Plant and Earthworm Workshop**

**Stevens Point, WI**

This one-day workshop hosted by UWEX and WI DNR will focus on identification, regulation and management options for common and not so common invasive plants and earthworms in Wisconsin, with an urban forest emphasis. The event includes both classroom instruction and outdoor demonstrations. At the County Annex Bluiding and Schmeckle Reserve from 8:30 a.m. to 3:00 p.m. \$35 by Sept 1 (\$40 after). For more information contact the Portage Co. UW-Extension office at (715) 346-1316 or [download the Portage Co. workshop brochure](#).

**Oct 17, 2015**

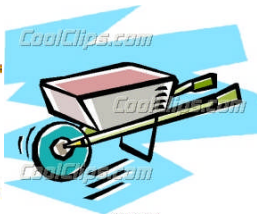
**Fall Seminar**

**Marshfield, WI**

Sponsored by the Wood County MGs from 8:30 a.m. to 12:30 p.m. (registration at 8:00 a.m.) at UW-Wood County, Room 133 at 2000 Fifth St, Marshfield 54449. Speakers include: Dave Wanninger – "New, Better Trees and Shrubs for the Home Garden" and Teri Lessig – "Ins and Outs of GMOs". Fee: \$10 collected at the door, call UW-Extension office to register (715) 421-8440.

## September Garden Guide

- Allowing September rose blooms to stay on plants aids in winter protection. Watch for black spot on roses and remove infected leaves.
- Lift gladiolus corms when leaves begin to brown. Dry in sun a few days.
- Divide most perennials except asters and mums, which haven't bloomed.
- Divide and replant peony roots. Avoid planting too deeply.
- Bring coleus, geranium, caladium and begonias indoors.
- Place amaryllis in cool basement for a 3-month rest period.
- To set buds, Christmas cacti require a rest period and cool nights (55 degrees.)
- Sow snapdragons, cornflowers and other hardy annuals a few weeks before the first frost date. Mark where planted to avoid damaging seedlings in spring.
- Carefully inspect spring flowering bulbs before planting. Discard soft bulbs.
- Remove newly set tomatoes, blossoms and new growth five weeks before expected frost because they won't have time to mature.
- Sow annual ryegrass or oats for winter cover and green manure in beds that won't be planted until late in spring. Keep watered.
- Remove all weeds from garden before they go to seed.
- Pinch out the growing points at the top of Brussels sprout stems so bottom sprouts will reach maturity.
- Watch for early frosts. Cover the garden when frost is predicted to obtain up to another month of growth. Water plants well for greater frost protection and maximum growth.
- Cut back perennials after frost.
- Dig and pot parsley, chives and tender herbs for transfer indoors to sunny window.
- For better keeping, harvest carrots, beets and turnips before first frost kills foliage.
- Gather squash, pumpkins and gourds when ripe and before frost damage. Leave two-inch stem on vegetable for better storage.
- Clear garden beds immediately after harvest. Destroy any diseased plants by burning, composting in a hot pile or sealing in container for disposal.
- Early September is the latest time to plant spring-flowering shrubs.
- Aerate lawn when temperature is 60-70 degrees.
- Stop planting evergreens by mid-September.
- Harvest pears when light green. Separate from branch with slight twisting motion.
- Harvest grapes. Fertilize with one-cup bone meal per plant.
- Harvest apples. Rake leaves and fallen fruit from apple trees to control disease and inspect problems next year. Be careful not to injure long-lived fruiting spurs when harvesting.
- Cut out spent raspberry and blackberry canes after fruiting.



# WOOD COUNTY MASTER GARDENER VOLUNTEERS ANNUAL POTLUCK PICNIC

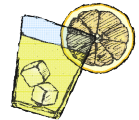
Lakes Golf Course, Lake Arrowhead Tuesday, August 25  
August newsletter will contain driving directions and additional information

5:00 Tour Lakes Golf Course Gardens

6:00 Program Chris Landowski

6:30 Picnic Supper

7:15 Business Meeting



## ***SPOUSES INVITED !!***

Pot Luck Supper Featuring  
Delicious Main Dishes  
Fabulous Salads Yummy Desserts  
All created by WCMGV Chefs

## **PLEASE NOTE**

**RSVP required for Planning Purposes!!!**

If you plan to attend notify  
Joanne Wilkinson by August 10th  
608-333-1504 or E-mail her at: [jo3nla@gmail.com](mailto:jo3nla@gmail.com)



Dish to Pass Options Listed Below

Last Name Begins with:

A — F Main Dish/Side Dish

G — O Salad

P — Z Dessert



Paper plates, cups, napkins, utensils serving items, dinner rolls and  
ice water provided will be provided by WCMGV Association.



# WOOD CO. MASTER GARDENER'S FALL SALE

*Same weekend  
as Maple Fall Festival!*

**A Perennial, House Plant  
& Garden Treasures Sale**

**REASONABLE PRICES!**

**SATURDAY, SEPT. 19, 9 - 4  
SUNDAY, SEPT. 20, 9 - 1**

**Sunday only  
\$2.00 off your plant purchase of \$10.00 or more**

**LOOK FOR US  
NEAR THE DUCK POND  
ENTRANCE OF THE  
MARSHFIELD ZOO**





# Fall Gardening Seminar

Saturday, October 17, 2014

8:30 am — 12:00 pm

(8:00 am Registration)

8:30 — 10:00

David Wanninger, Director of Boerner Botanical Gardens

*Presents: Not the Same Old, Same Old ....*



*New, Better Trees and Shrubs for the Home Garden*

10:30 — 12:00

Theresa Lessig, Horticulture Educator

UW Extension, Wood County



*Presents: "The Facts and Future of Genetically Modified Organism (GMO's)".*

## UW Marshfield Campus

2000 Fifth St. Marshfield

Multi-media Classroom 131

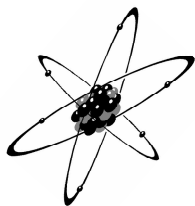
Public Invited — Limited Seating Available

Early Registration Recommended

Registration Deadline: October 9th

UW Extension office: 715-421-8440

Fee: \$10.00 (payable at Program Check-in)



*Refreshments available during registration and break.*



**Park in parking lot on east end of campus and enter by greenhouse**

*University of Wisconsin, U.S. Department of Agriculture and Wisconsin counties cooperating.*

*UW-Extension provides equal opportunities in employment and programming including*

*Title IX and ADA. Please make requests for reasonable accommodations to ensure equal access to educational programs as early as possible preceding the scheduled program, service or activity.*

