



WOOD COUNTY MASTER GARDENER ASSOCIATION

Wood County WI

May 2024

President's Message May 2024



Last week, after a cool, breezy, sunny day, we drove to our monthly meeting in Marshfield. There were dark storm clouds in the west, which eventually pelted the windows at our meeting place at the Chestnut Center. On the way back to Rapids after the meeting, Oh My Goodness! A big, beautiful, full moon, low in the sky right in front of us, lit our way all the way home. Beautiful!

This day reminded me of this graphic. I love the month of May and all the potential it holds. The beautiful Wisconsin summer is still ahead of us, and our home and project gardens are full of potential hiding below the surface of the soil. We are anticipating many blessings and benefits for the work and dedication involved in planning our Garden Walk and Plant Sales, educational opportunities, and social events. Hope to see you at many of these! MAY the sun and moon, the rain and breeze, and our walk together bless you, your family, and our work as the WCMGVA.

Chris

April Meeting Minutes p. 2
May Meeting Details p. 3
Educ Offerings for CE p. 4-9
Project Spotlight of the Month p. 5
WIMGA Corner p. 6
Calendar of Events p. 10

Project Updates p. 10
Spring Plant Sale p. 11-13
Garden Walk p. 14
Fall Plant Sale Buzz p. 15
Road Trips p. 16
May Garden Guide p. 17

April Meeting Minutes

Wood Co. Master Gardener Volunteer Assoc. General Membership Meeting

April 23, 2024 6:00 pm

Chestnut Center for the Arts – Marshfield - Zoom

Program: Invasives with Matt Wallrath Total present: 15 - (2 via Zoom)

Business Meeting: Called to order 7:15 by President Chris Grimes.

Secretary's Report: (J. Miller) Review of minutes from March 26, 2024 was without corrections or additions. It will be put on file.

Treasurer's Report: (F. Marx/ Chris) Written report from Famia. Report reviewed and put on file. Credit card linked to our checking account has been secured. Chris and Famia will develop guidelines related to use of the credit card.

WIMGA: Report: (K. Remington) As we go through the season, give some thought to the WIMGA grant possibilities. Applications are due in the fall.

Old Business: Awards: Donna Streiff was given her Award for 2000 Hours of Volunteer work, left over from last meeting.

Garden Walk 2024: (Lil Schotten) Brunch/Social for owners, artists, musicians participating in the Garden Walk was well attended. It was held on April 6th. Participants had many positive comments and appreciated the information given out. Tickets and posters are printed and will soon be distributed. Lil will host a Meeting/Brunch at her home on May 6th to update the committee. We are still collecting items to fill the raffle baskets.

Plant Sale Update: (Jill Becker) Jill, Mickey and Famia visited Tender Shoots where they chose the seedling vegetable bedding plants for our Plant Sale on May 18th. Posters and Save the Date notices are available for members to distribute. The Plant Sale poster is on Facebook. We encourage you to share it with your friends. The Grab 'n Go Bake Sale WILL take place. Bring your donations in individual baggies with clear labeling. Set up will be on Friday, May 17th.

Programs: (Karleen/Bea) Location sites for Sept., Oct., and Nov. to be determined.

Socialization: Greenhouse Circle Tour with lunch stop is planned for Wednesday - May 8

Trip to Jurustic Park and Art Studio and Urban's Greenhouse- June 11

New Business: Tea and Tulips Report: (Chris) About 30 people attended the Brunch/Presentation on Sat, April 20 at the SWCHM. The attendance was up by 50% from last year. The program, presented by Janell Wehr, was "No Mow May-Further Research" and "Strategies for Pollinators". The Educational component seemed to appeal to the attendees and promoted lively discussion. We can be thinking about improvements for next year's event by building on this year's successes.

Project Spotlight: Mickey Erickson shared information about her project, the South Wood County Historical Museum Garden. This is the 2nd monthly Spotlight which shares progress of a funded project. We learned that the Museum building itself was built in 1907. It is surrounded by 2 acres which overlook the Wisconsin River. A unique feature is that the lawns and gardens are irrigated by water from the river. Next month the Spotlight will focus on the Marshfield Community Gardens.

Memorial: Kevin Miller, a member of our MG group recently passed away unexpectedly. Famia sent a check in the amount of \$50 to his family to be put towards the memorial.

Adjournment: M/S/P to adjourn at 8:02.

Next meeting: Tuesday, May 28th, 2024 6:00pm Program: Tour of Carolyn Schulein's garden.

Respectfully submitted,

Judy Miller, Secretary

May Meeting Information

SPRING GARDEN TOUR
With Carolyn Schulein
at
1100 Onstad Drive, Marshfield
(Corner of Adams and Onstad)
6 PM, Tuesday, May 28, 2024
In person only

Carolyn will share her garden landscape with fellow Master Gardener Volunteers. You are encouraged to dress for the weather, rain or shine, and to **bring a lawn chair** for the business meeting after the tour.

Directions from Wisconsin Rapids via Hwy 186 through Vesper and Arpin: From Hwy 186 turn left onto Hwy 10. At the roundabout, go halfway around and follow County BB to the west.

About 1 mile ahead, take the first road to the right, which is Lincoln Avenue. Follow it all the way to the first stop sign, which is 14th Street. (Weber Farm Store is on the left side across 14th Street.) Continue straight on Lincoln Avenue to the next stop sign, which is Adler Road or County Y. Turn right on Adler Road. Go two blocks to Adams Avenue and turn left. Onstad Drive is the third cross street. You would normally turn left on Onstad, but Carolyn says the street is very narrow and parking on Onstad would block the road, so **please park on Adams Street**. Carolyn's home is the first house on the left side of Onstad.

Directions from Pittsville via 73 and 80. Go through one roundabout where US Hwy 10 joins Hwy 80, following US Hwy 10 toward Marshfield. At the second roundabout, go three quarters of the way around, and follow County BB to the west. Follow the above directions from there.

Future Programs

June: 25: Shade Gardening including Natives with Janell Wehr at Chris Grimes' garden, WR

July 23: Edgewater MG project with Judy Miller in Port Edwards

August 13: Potluck Picnic with local horticulture experts at Vesper Park, Vesper

September 24: What's the Skinny on Wise Salt Use? with Allison Madison from WI Salt Wise

October 22: Growing House Plants with Famia Marx

November 19: Safe and Successful Researching with Donna Streiff

Education Opportunities for C. E. Hours

UW Extension Horticulture [Wisconsin Horticulture – Division of Extension](#)

The Buzz About Wisconsin's Periodical Cicadas May 15 12-1pm

Our big emergence of periodical cicadas is nearly here in Wisconsin. Join in to learn about the biology and life cycle of these fascinating insects and their role in the ecosystem. We'll also take a look at when and where to expect cicada activity in the state and what it could mean for your own yard.

[Webinar Registration - Zoom](#)

Protecting Pollinators while Managing Pests June 19 12-1pm More in June newsletter

From the Plant Disease Diagnostic Clinic The Clinic will sponsor a Zoom presentation on a plant disease-related topic each month. To register for one or more talks, go to [2024 PDDC Monthly Disease Talk Registration Form | Plant Disease Diagnostics Clinic \(wisc.edu\)](#)

The Science (and Art) of Plant Disease Diagnosis May 22 6:30 – 8:30pm Zoom Registration [2024 PDDC Monthly Disease Talk Registration Form | Plant Disease Diagnostics Clinic \(wisc.edu\)](#)

Ask the Experts May 20 1-2pm

Join our monthly online programs in 2024 for an opportunity to connect with plant health experts from the UW-Madison Division of Extension. Each session, held on Monday afternoons from 1:00-2:00 pm, is your chance to ask questions about your trees and shrubs, garden vegetables and ornamentals, and lawns. Whether it's about plant diseases, pesky insects, or the selection and general care of plants in and around your home, our panel of seasoned experts will provide you with insightful answers. Don't miss out on this opportunity to cultivate your knowledge and keep your plants thriving. May 20 registration link: [Webinar Registration - Zoom](#)

Melinda Myers website

Ornamental Fruits and Vegetables May 1 6:30pm

Increase the nutritional value and beauty of your landscape by incorporating attractive fruits and vegetables into your landscape, garden beds, and containers. Growing varieties that are both ornamental and productive increases the opportunities for creating a beautiful space right outside your door. We will look at new and proven fruit and vegetable varieties suited to both gardens and containers. [Webinar Registration - Zoom](#)

How to Plant Your Rain Garden May 9 6:30pm

You've selected the location, purchased your plants and now you are ready to start planting. We'll take a step-by-step approach to make this process as easy as possible. We'll discuss fine-tuning the garden design, preparing the planting bed, and setting the plants in place for an attractive display. Melinda will cover the care your new plants will need during their first summer, ensuring they establish a deep, drought-tolerant root system that will serve them well in the seasons ahead. Fortunately, a properly planned and planted rain garden provides many benefits with minimal maintenance. [Webinar Registration - Zoom](#)

Education Opportunities for C. E. Hours

Under-Appreciated Pollinators June 5 6:30pm

With gardening expert Melinda Myers. The plight of honeybees and monarchs fill the news but many more pollinators are often overlooked yet critical to the production of food, fiber and other raw materials we depend upon. Native bees, moths, bats, beetles, flies, and birds are also important. We will look at a variety of pollinators, their role in the environment, and their impact on people. Plus, we will discuss ways to co-exist with these often overlooked and sometimes feared or dreaded animals. [Webinar Registration - Zoom](#)

For more of Melinda Myers, on the home page, scroll down to the orange button on the right side of the screen "Watch on-Demand Webinars". Click on it and you will find a long list of her programs that have been recorded in the past year or two.

South Wood County Historical Museum

Project Spotlight of the Month

A longstanding MG project, the two-acre property has over a dozen themed gardens around the historic home. A front yard garden bordering the street features shrubs, perennials, annuals, and bulbs for three season interest. A shady side yard allée is lined with hydrangeas and hostas. Tall arborvitae, weigela, and spruce hide a view of the parking lot from the street corner, while a rose and allium garden fills the corner on the other side. At the entrance to the driveway, spring bulbs, sedum, catmint, ajuga, iris, and hostas grow under a large old maple. The Jim Lucas sculpture garden on the north side is planted in spring bulbs and summer lilies. A bench in memory of MGV Nancy Alger surrounded by a garden of cimicifuga, Solomon's seal, ferns, phlox, spirea, pulmonaria, lilacs, and a redbud tree provides a quiet place to rest and enjoy views of the river. Off the portico on the north side, a honey locust in the center island is surrounded by lilac, weigela, Joe Pye weed, Annabelle hydrangeas, peonies, sedum, hardy geraniums, astilbe, grasses and pulmonaria. Under four old Black Walnut trees on the west border, facing the river, rests the Grim Natwick Historical marker, among a large bed of hostas. This Spring's special project will be renovating this bed. Tall cast iron urns are planted with seasonal arrangements, including ever-green boughs and dried hydrangeas providing winter interest. More community volunteers are needed to assist the MG team at this garden. Please talk with your gardening friends and share Micky's contact info with them if interested.



WIMGA Corner

The Wisconsin Master Gardener Association annually awards **grants** to local associations for **community education** activities. Applications may be made for \$400, \$250 and \$100 projects. We must apply for the grants as an organization.....not as individual master gardeners. However, a grant may be managed by a smaller Wood County Extension MG committee or a horticulture project group. An association may submit up to three grant applications but each must be for a different monetary amount and a different educational purpose. Generally, an association can be awarded no more than two grants. Application deadline is October 1, 2024 and notification of awards is made on November 15. A progress/final report about your winning grant activity is due on July 31, 2025.

The Wood County Extension Master Gardeners have received awards in the distant past. No applications have been made since our “covid break”. That’s why I am encouraging you to think ahead as the 2024 gardening season begins and look for opportunities where your committee or horticulture project group can incorporate or enhance an education component in 2025.

Some of the recent grant awards have included school and/or community based youth education activities, speaker honorariums for conferences and workshops, an education project in collaboration with the FoodWise program, upgrades to an interactive nature trail, support materials for a library seed savers program and an information display case for a public garden. Many of these activities are being done in collaboration with other community organizations so think along those lines if “more hands will make lighter work” for you. Some past grant reports have been printed in WIMGA newsletters. Look there for some inspiration.

There are application forms for each category available on the WIMGA website. Take a look and see what kind of information is requested. I am available to help with putting together that information to make your proposal a strong one. I’ve had many years of grant writing experience and although I can’t write your proposal for you, I will be happy to review it and make suggestions. I have no influence in making awards as I am not on the WIMGA Finance Committee.

If you decide you want to write a grant proposal, please let Chris or me know so we can make coordinated plans if more than three groups wish to apply. Or, if you have an idea circulating in your head and you want to run it by us before doing serious planning, we’d be glad to help you focus.

REMINDER: The Adaptive Gardener with Mark Dwyer is currently available for your viewing on the WIMGA website. It’s an education opportunity before the serious gardening season sets in!

—Karleen Remington, WIMGA Rep

All events will be led by Master Gardener Educators & take place at the Lester Public Library of Rome

ROME GARDEN CLUB 2024 EVENTS



APRIL 24TH, 2024
9:30-11AM

CUTTING BACK & DIVIDING NATIVE GRASSES

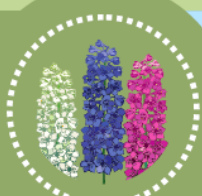
Discussion | Hands-On



MAY 8TH, 2024
9:30-11:30AM

SUSTAINABLE LANDSCAPE DESIGN

Discussion | Led by Becky Gutzman, Retired UW-Extension Educator



JUNE 12TH, 2024
9:30-11AM

DIVIDING & SHARING PERENNIALS

Discussion | Group Share | Hands-On | Led by Jennifer Fane



JULY 10TH, 2024
9:30-11:30AM

MAKE & TAKE STEPPING STONES

Hands-On | Registration Required | Led by Laurie Francis & Robert Stoldt



AUG. 14TH, 2024
9:30-11AM

NATIVE SHADE PLANTS

Discussion | Led by Barb Herreid



SEPT. 11TH, 2024
9:30-11:30AM

LAWN CARE FOR SANDY SOILS

Presentation | Discussion | Led by Janelle Wehr, UW-Extension Educator



OCT. 9TH, 2024
9:30-11AM

GROWING GARLIC & WALKING ONIONS

Discussion | Hands-On | Registration Required | Led by Jennifer Fane

Dodging Plant Disease Bullets at the Greenhouse

Our early warm weather has me chomping at the bit to visit local greenhouses to spend money on my favorite annuals and perennials. Greenhouse growers do their best to produce plants that are healthy and vigorous, but even with the best of care, plants can sometimes end up with unintended disease issues. As consumers, we need to be diligent and watch for potential issues to make sure we don't bring diseases home to our ornamental and vegetable gardens. Here are a few tips on what to look for when buying plants to avoid problems.



Select plants that are vigorously growing, but aren't overly leggy.

Stunting in plants can be caused by several types of diseases including [root rots](#) and a variety of plant viruses (more on virus diseases in a bit). To get a better sense if plants have a [root rot](#) problem, carefully pop plants out

of pots and look for root discoloration. Healthy roots should be white, but if you see roots that are brown or black, there's a good possibility that [root rot](#) pathogens are present. That said, root discoloration can also be caused by certain non-disease issues such as heat or salt injury, and plants with these sorts of injuries should be avoided as well.

Leggy plants may be healthy, but often this leggy growth is wimpy and easily injured, particularly as plants are moved and transplanted. Whenever you injure plants, the wounds you create can provide entry points for a variety of plant pathogens, particularly bacterial pathogens.

Avoid plants with leaf browning.

Browning around the edges of leaves typically indicates that plants have been stressed for water. This marginal browning could mean that the plants weren't watered enough during production but can also be another symptom of [root rots](#).

Brown leaf spots can arise due to a variety of disease-causing organisms. If leaf spots are roughly circular, then the most likely cause is some sort of fungal pathogen (and there are a myriad of fungi that can cause leaf spots and blights). If you see spots with concentric rings (i.e., looking like a target), then you could be dealing with certain viral pathogens like [Impatiens necrotic spot virus](#) (INSV) or [Tomato spotted wilt virus](#) (TSWV). These viruses are common in greenhouse settings and are easily moved around by thrips (a type of insect).

If you notice angular leaf spots (i.e., spots bordered by veins, giving the spot a straight-edged look), check to see if there is a yellow halo bordering the dead tissue. If so, you're likely dealing with [a bacterial disease](#) of some kind. If the angular spots don't have a halo, then you could be seeing symptoms caused by [foliar nematodes](#).

Whether spotting is caused by a fungus, a bacterium, a virus, or a nematode, don't bring these

symptomatic plants home. All of these pathogens can potential spread to other plants in your garden.

Avoid plants with odd leaf coloring.

Some plants naturally have variegated foliage and this is a highly prized horticultural feature. However, if you notice plants with unexpected blotchy light and dark-colored leaves, yellow lines or yellow ring patterns, avoid these. These sorts of symptoms are often caused by plant viruses such as [Tobacco mosaic virus \(TMV\)](#), [Hosta virus X \(HVX\)](#), [Cucumber mosaic virus \(CMV\)](#), and [Tobacco rattle virus \(TRV\)](#). Once introduced into a garden, plant viruses can easily be spread to other plants by touch ([TMV](#)), gardening tools (virtually any plant virus), insects such as aphids ([CMV](#)), and naturally occurring soil-borne nematodes ([TRV](#)).



Avoid plants with fuzzy growth on the leaves.

Fuzzy growth typically indicates a fungal or water mold infection of some kind. White fuzzy growth on upper and lower leaf surfaces can indicate a [powdery mildew](#) problem. [Powdery mildews](#) are ubiquitous and readily develop in humid conditions that are common in greenhouse settings. These diseases are often relatively cosmetic, but on certain plants (e.g., cucumbers, squash, pumpkin, bee balms, phlox), [powdery mildews](#) can cause substantial leaf browning and loss.

White, gray, or purplish fuzzy growth on the undersides (and only the undersides) of leaves is characteristic of [downy mildew](#) diseases. I routinely find [downy mildew on basil](#) wherever this plant is sold. The first symptom of the disease that I notice is typically leaf yellowing. When I see this symptom on basil, I then flip the leaves over to look for typical fuzzy gray/purple growth on the undersides. [Downy mildews](#) tend to be more destructive than powdery mildews, so it's best not to bring these diseases home on your newly purchased plants.

Don't panic.

Most plants available at your local greenhouse and nursery will be healthy and disease free. With just a little care, you can avoid those rare diseased plants that may pop up, and end up buying healthy, pathogen-free plants that will provide months, if not years, of gardening enjoyment.

Need help?

For more information on plant diseases and their management, check out the UW-Madison [PDDC website](#) (<https://pddc.wisc.edu/>). Alternatively, if you have disease questions, feel free to call (608) 262-2863 or email pddc@wisc.edu for advice and guidance. To keep up to date on clinic activities and resources, follow the PDDC on Facebook or Twitter (@UWPDDC), or subscribe to the clinic's listserv, UWPDDCLearn (by emailing or phoning the clinic to subscribe).

Happy shopping everyone!

Calendar of Events

May 8 Greenhouse Road Trip*

May 18 Spring Plant Sale Port Edwards*

May 25 Clean Sweep Marshfield Ag Research Station 8am-noon**

May 28 Membership Meeting at Carolyn Schulein's garden*

June 11 Marshfield Area Road Trip

June 25 Membership Meeting at Chris Grimes' garden

June 26 Marshfield Library Pollinator Family Night***

July 20 Garden Walk*

July 23 Membership Meeting at Edgewood gardens***

Sept 7 Clean Sweep Saratoga Town Hall and Garage 8am-noon**

* See related articles in this newsletter for details

**For more detail, go to [Environmental Health - Disposal - Wood County Wisconsin](#)

***See help needed below the Calendar of Events

Project Updates

The following organizations in the ORS host MG projects that would welcome help in 2024. Please refer to the member roster in the **Members Only** section of our website for project leader contact information.

Edgewater Sensory Garden: Port Edwards. Workdays generally Monday mornings, starting about 9am, as well as other times as needed. **Clean up work days May 2, May 9, May 13, May22.**

Marshfield Public Library To help with "Garden Guru" programming (in person and zoom), contact Donna Streiff. **Special education program on June 26. Need help planning and preparing for the program and assistance on the night of program.**

Project Updates

WCMGV Third Annual Spring Plant Sale is Saturday, May 18th – Port Edwards

WHERE: Cathy Schutz's home, 930 Westport Drive, Port Edwards 54469. **Help needed:** See below

Donate: May 12th to 17th. **Accepted donations and bake sale items:** See below and guidelines for bake sale items. **Set-up:** May 17th 9am – 3pm **Sale/clean-up:** 8am-4pm on 18th **Promote the sale:** See below



What can I donate? Bulbs/Rhizomes, Houseplants, Perennials, Seeds, Seed Starting Supplies, Succulents, Vegetable Starter plants. Save small houseplants until larger for the fall sale. Remember to **Attach plant labels.**

\$1.00 Bake sale items – wrapped (in sandwich bags) individually or in sets.

We prefer to sell these additional items in the fall to keep the spring sale simple: Accessories, Art, Bird/ Butterfly related, Books/Magazines, Colored Bottles, Décor, Dried Arrangements, Tools, and Yard items.

Since the **bake sale** items will be homemade, we have some regulations that we need to follow regarding safe bakery items and allergies. (Read the separate article on bake sales below). Last year's bake sale made \$262. Let's do it again.

How do I get my donations to the sale? Between May 12th and 16th there are three locations where you can drop off your non-plant donations: Ann – Rudolph, Cathy – Port Edwards, Jill – Marshfield. On Thursday, the 16th, by 6pm you can drop off your donation at the South Wood County Historical Museum for Micky to pick up. Their contact information is in the members only tab. Hang onto those live plants until close to the 16th.

Friday May 17th Set-up – 9am to 3pm or when finished. Tasks/to do's

[] Transporting tentage and tables from/to storage in Rudolph. [] Setting up tents, tables and check-out. [] Unload donations and put them in their sale location. [] Arrange and price plant and non-plant décor. [] Putting up sale signs, plant identification signage, educational displays, and supplies. [] Cover products for the evening.

Saturday, May 18th Day of Sale. Help all day, in the morning or afternoon.

Report 7:30am Sale 8am to 4pm, may extend time if there are still shoppers and we have product.

[] Ready area, assist customers with their purchases, consolidate products, etc. [] Two-three people at the check-out bagging, tallying and handling the cash box. [] Staff - Ask a Master Gardener Booth.

[] Box/sort the leftover plants and products into Keep for fall sale, Donate to, etc. [] Return signage and supplies to their totes. Plus, pick up the street plant sale signs. [] Clean and stack tables and take down and pack tentage.

Spread the word with the face book post, email friends and family, hang up the poster, and set out some save the date announcements at your favorite places. **SAVE THE DATE FLYERS** – Promotes both plant sales and the Garden Walk.

Spring Plant Sale Bake Sale - Bake sale safety and other procedures

The addition of a bake sale to our Spring Plant Sale is a quick and simple way to contribute to the plant sale, especially if you or a family member likes to bake! I have checked with the local, county, state and Department of Agriculture Trade and Consumer Protection. They all stress the importance of the sponsoring organization being responsible for the safety of the food products they offer for sale. This comes down to two major factors: food allergens and those potentially hazardous foods which are not allowed at bake sales. Nuts are the most well-known food allergy. These eleven are the most common food allergens: Milk, Citrus, Eggs, Soy, Peanuts (peanut butter), Wheat, Tree nuts, Melon, Strawberries, Shellfish, and Fish. Some of these are expected to be in certain bakery goods and people with allergies avoid these products. However, sometimes ingredients can be hidden, so please identify on a label those allergy foods that are in your home-made bake goods.

People that go to community rummage sales visit a lot of sales before heading home. Safe baked goods are those that can safely remain unrefrigerated and will not support the rapid growth of bacteria that would make people sick when held outside of refrigerated temperature. So, any product that requires refrigeration such as cream-filled pastries, custard or cream pies, or items made with cream, i.e., a traditional buttercream frosting, should not be sold.

Please follow these guidelines:

- Label items that contain allergens, i.e., “contains nuts” or one of the eleven common types.
- Ready to serve food; i.e., the customer requests a piece of cake cut out for them, this requires us to have a license, which we do not have. Therefore, all items must be ready for sale, packaged at home.
- “All food units, sets or individually, must be wrapped in plastic, foil, or waxed paper” I suggest also using a paper plate or small paper container for support.
- Acceptable bake sale items are shelf-stable, non-potentially hazardous foods.
- Non-acceptable are those items that are frosted with buttercream frosting made with cream, or items with cream/custard filling, cheesecake, meringue, pumpkin pies or fruit-based pies that require refrigeration. Note: very moist banana and zucchini breads are discouraged as well.

Most of us are well aware of the prohibition of digging plants from our gardens as of now. All plants and some bulbs need to be in potting soil, not garden soil.

Save most non plant materials for the fall sale, unless the item specifically says “spring/summer”. We are trying to keep pricing time to a minimum for this sale.



Common Name _____

Botanical Name _____

Light Sun Part Sun Part Shade Shade
Height _____
Bloom Color _____
Bloom Time _____
Comments _____



Common Name _____

Botanical Name _____

Light Sun Part Sun Part Shade Shade
Height _____
Bloom Color _____
Bloom Time _____
Comments _____



Common Name _____

Botanical Name _____

Light Sun Part Sun Part Shade Shade
Height _____
Bloom Color _____
Bloom Time _____
Comments _____



Common Name _____

Botanical Name _____

Light Sun Part Sun Part Shade Shade
Height _____
Bloom Color _____
Bloom Time _____
Comments _____



Common Name _____

Botanical Name _____

Light Sun Part Sun Part Shade Shade
Height _____
Bloom Color _____
Bloom Time _____
Comments _____



Common Name _____

Botanical Name _____

Light Sun Part Sun Part Shade Shade
Height _____
Bloom Color _____
Bloom Time _____
Comments _____

Project Updates



Garden Walk 2024 Update

Progress: (prog.ress) *noun*; forward or onward movement toward a destination. Master Gardeners . . . we are on our way!

Garden Host Orientation

On April 6th we held an event called "Ready, Set, Bloom!" at the Wood Co Historical Society Museum with invited guests including 2024 Garden Walk hosts, artists, musicians, vendors & the garden walk team. Our goal to link gardeners with mentors, introduce folks to one another, create an atmosphere of friendship & support was truly met. Thank you Garden Walk team, for lighting the spark that now gets garden preparation started.

Garden Walk Tickets.

Tickets are printed and will be available at the following businesses for early sales (\$10.00) after April 26th:

WI Rapids: Angel Floral & Design, Reeves, Urbans, Wunrows

Nekoosa/Rome: Beavers, Foss's Garden Center

Port Edwards: El Café

Marshfield: Schalows

Stevens Point: JayMar

Posters. Save the Dates

Garden Walk Posters and Save The Dates (advertising the garden walk as well as Spring and Fall plant sales) will be widely distributed during the last week of April and available to WCMGs at our April Meeting in Marshfield. If master gardeners are interested in purchasing advance tickets for friends/family personal use contact a member of the garden walk team.

Basket Raffle

Thank you to those who have donated items or \$ toward the basket raffles or contributed to the silent auction. We are still looking for a few items to round out baskets. Please reach out with your support if able, thank you! Barb 715-459-7374, Jan 720-951-5837

We Have Artists Among Us

Famia, Deb, and Jan are busy at work on Garden Host gifts. Here's a preview of this year's garden stone gift - a "Hosta in Bloom". This will be a fitting gift for our hosts as each features hostas of one kind or another in their gardens. Great job, girls!

Next Team Meeting

At our May 6th meeting we will focus on volunteer needs the day of the walk, "job" descriptions for volunteers, continued promotions on business marquees, newspaper ads, TV & radio spots and develop signage plans for directing traffic. We are always open to new committee members! Contact Lil at 715-213-7672 if you would like to join in on the fun !



Fall Plant Sale Buzz



Things To Do Now

- Look for sales on potting soils and let others know.
- Donate 4 and 6-inch pots. Members doing winter sowing / propagations can always use them. We are trying to use uniform size pots to make sale pricing easier.

If you are overwintering plants from the fall sale:

- Check on overwintering plants from last fall. With our goofy weather, you may need to water during warm dry spells to keep the soil from drying out, even if the plants have not yet started new growth this spring.
- Don't be too quick to discard what you think are dead overwintering plants. Some native plants do not "wake up" until later in the spring.

Dry arrangement materials:

- Have you planned to add plants that have interesting seed heads for dry arrangements to your garden design this year? If so, start to think about starting seeds or shopping around for plants soon. See the 2023 September newsletter for a list of possible choices.
- Watch for seed heads after plants finish blooming, and begin to harvest for dry arrangements as they mature and dry.

Houseplants:

- Continue to propagate houseplants now that growth starts picking up in spring.
- Save small sized plants and allow them to grow larger for the fall sale, where they will be priced higher.
- Start fairy gardens or succulents in interesting containers.

Winter Sown Plants:

- Check winter sown plants for germination. When the weather warms, start to open the containers to avoid overheating if plants have begun to show growth. Watering may also be necessary.
- Place winter sown plants into places with the appropriate light requirements as they begin to germinate, shade plants in the shade and sun plants in the sun.
- When plants have two pairs of true leaves, transplant to 4 inch pots and label each pot. If seeds were too thickly sown and impossible to separate, plant a "small chunk" of seedlings, then later cut off all but the strongest seedling in the pot after the transplant shock passes.
- Start seeds for plants that do not require cold stratification.



Spring Planting Road Trip

Celebrate spring with a little tour of Clark County Greenhouses, just North of Marshfield

POSEY PATCH GREENHOUSE & GIFTS TURN PIKE GREENHOUSE

We're planning to visit these two greenhouses, but there are many more on our circle tour that you can visit. Both greenhouses will have **coffee and cookies** waiting for us when we arrive. Posey Patch has offered us **10% off greenhouse and gift shop purchases**.

Lunch will be in Abbotsford. After lunch, we'll head back to Marshfield, stopping first at

THINGS THAT GROW GREENHOUSE

Wednesday, May 8.

Car pool/caravan leaving from the **Wisconsin Rapids YMCA parking lot** (across from WRPD) at 7:30 am. We'll have a stop at **Weber Farm Store** for a break and meet with North Wood County friends. Departing at 8:30 am. Returning to Marshfield and Wisconsin Rapids on your timetable after lunch.

Hope you can join us. **Bring a friend!** Contact Chris Grimes for questions.



Summer Fun 2024

Our Social Committee has planned some great outings for 2024! Hope you can join us for one or more. Feel free to invite a friend! Here's a head's Up. More information coming in monthly newsletters.

May 8 Road Trip to Clark County Greenhouses. Plant shopping and lunch. What could be better?

June 11 Tour of Jurustic Park and Mrs. Wynia's art studio, followed by lunch. Later Urban's Greenhouse in Rudolph will host a succulent planting workshop just for us. Bring your own container to make your own creation.

August/ September plans TBA

May Garden Guide

Taken from Portage County Master Gardeners website

- Set Easter lilies in garden.
- Plant cool-weather crops: lettuce, spinach, chard, parsnip, onion sets, beets, carrots, kohlrabi, mustard, turnips, radishes, peas, parsley, and potatoes in early May. Soil temperatures should be at least 45 degrees.
- Plant snap beans, pole beans, sweet corn, and onion plants in mid-May. Sweet corn planted earlier in the season has fewer pest problems.



- Inspect for Iris borer larva on iris leaves. Crush larva.
- For bigger peony flowers, de-bud several branches. Stake before buds open.
- Set out pansy plants when ground is workable.
- Dig and divide mid summer and fall blooming perennials before tip growth gets too tall.
- Plant tuberous begonias.
- Watch birch leaves for birch leaf miner infestation. Use sticky traps to monitor emergence of adults to help time spraying with summer oil, Neem extract, or rotenone. Sprays are only effective on adults or larvae before they tunnel into leaves. Some soil applied systemic chemicals may be effective in controlling larvae after they have tunneled into leaves.



- Plant tomato seedlings by pinching off lower leaves and placing on its side in a shallow furrow 2.5 inches below the soil surface. Soil closer to the surface is warmer and will speed tomato growth.
- Plant and transplant new evergreens before new growth appears.
- Plant strawberries, bush fruits, and grapes in mid month. Pinch blossoms from newly planted strawberries to develop strong plants for next year.
- Remove faded flowers from spring-

flowering bulbs. Cut off stalks but allow leaves to die down naturally. Fertilize after blooming with 5-10-20.

- Plant stored geraniums in well-drained soil after last frost and keep moist. New growth should begin in one week.
- Prune spring-flowering shrubs after flowers have faded. Apply fertilizer.
- Toward end of the month, harden off seedlings of vegetable transplants and annuals grown indoors. Bring in at night or place in cold frames before planting in garden.

2024 WCMGV BOARD OF DIRECTORS

President—Chris Grimes
715-424-2878

Vice President—OPEN

Secretary—Judy Miller
715-572-4798

Treasurer—Famia Marx
715-652-2405

Director—Jill Becker
715-387-8040

Director—Lil Schotten
715-213-7672

Director—Bea Kohl
715-423-8908

Director—Carolyn Schulein
715-389-9027

Communications Rep.—
Chris Grimes
715-424-2878

WIMGA Rep—
Karleen Remington
715-387-1863

Newsletter Editor—Donna
Streiff
715-207-6218

Wood County Extension Horticultural Agent
Janell Wehr janell.wehr@wisc.edu

The Wood County Master Gardener Association is a non-profit organization with a mission to educate and share information with its members and the community alike. In addition, it is our charge to promote the UW Extension from which we are founded. We are a diverse group interested in the latest research-based horticultural information.

Future Article Submissions

Please send items for inclusion in the newsletter by the 25th of the previous month to: streiffonclay@tds.net

Wisconsin Master Gardener Website:
<https://mastergardener.extension.wisc.edu/>

Wood County Extension Website:
<https://wood.extension.wisc.edu/>

Wood County Master Gardener Association Website:
<https://wood-county-master-gardeners.org/>

WIMGA Website:
<https://www.wimga.org>

Reminders

- If you need continuing education hours, see page 3
- Continue to start house plants, succulents, fairy gardens, etc. for plant sales
- Check on overwintering and winter sown plants for new growth
- Volunteer to work on one of our major projects—Plant Sale(s), Garden Walk, CWSF, new Library Summer Family Night Program.