

## President's Message August 2024

### Christmas in July

Both of my children were born on [July 25th](#), 4 years apart. I could say it was due to meticulous planning and pinpoint timing, but actually, it was just Mother Nature doing her thing. At our house, every year really **was** like [Christmas](#) in July. There were festivities, decorations, special foods, presents from far and near, and our own family tradition of the Birthday Fairy who, like St Nick, came in the night and left surprises for the birthday boy and girl.



Our Garden Walk last month was like [Christmas](#) in July for WCMGA. It was festive and fun; full of friends and surprises. You can believe this...the Garden Walk planning team really **did** use meticulous planning and pinpoint timing! Kudos to Lil and the entire team and their work since last summer finding and supporting host gardeners, planning ticket sales & publicity, assembling raffle baskets and securing auction items, making uniquely gorgeous host gifts, preparing educational materials and plant stakes, recruiting artists and musicians, enlisting community volunteers, and communicating everything to everybody. (Whew!). And boy, were there gifts! The real gifts we received were the teamwork and sharing of time, talents, treasure, and commitment of so many people: our own MG members, but also many community volunteers and friends, garden owners, musicians and artists, ticket vendors, raffle and auction donors, party food donors, and corporate sponsors. A huge Thank you for your part in making this event a success!

There's a song that says [Christmas](#) is the "Most Wonderful Time of the Year". I venture to say a WCMG [Christmas](#) in July is "The Most Wonderful Time of the Summer". Merry Summer and Happy Gardening! —Chris

July Meeting Minutes p. 2  
August Meeting Information p.3  
August Road Trip p. 3  
Educ Offerings for C E p. 4-7  
Master Gardener Course options p. 8  
Project Spotlight of the Month p.9

Project Updates p. 10  
Garden Walk p. 10  
Central Wi State Fair p. 11  
Fall Plant Sale Information p. 12-14  
Fall Plant Sale Buzz p. 15-16  
WIMGA Corner p. 16  
Calendar of Events p. 17  
Help Needed p. 17  
August Garden Guide p. 18

# July Meeting Minutes

## Wood County Master Gardener Association General Membership Meeting July 23, 2024 - 6:00 pm Edgewater Sensory Garden – Port Edwards

**Program:** Tour of Edgewater Sensory Garden – Judy Miller & Karen Shirek

Total Present: 14

**Business Meeting:** Called to order 7:03 by President Chris Grimes.

**Secretary's Report:** (J Miller) Minutes from June 25, 2024 reviewed without corrections or additions. Minutes will be put on file.

**Treasurer's Report:** (F Marx) Written report from Famia. Report reviewed. Garden Walk results still incomplete. Report will be put on file as it presently stands.

**WIMGA:** See website for potential educational opportunities. Classes and meetings are set up for fall. Continue to consider signage/stakes for project gardens which would qualify for the grant in Oct. Chris will be gathering data.

**Old Business:** Central Wisconsin Fair Booth – (Jill B) Helper signup sheet was once again circulated. Dates to work in the booth are Tuesday, August 20 - 25<sup>th</sup> for 3 1/2 hour shifts.

**Fall Plant Sale:** (Jill B) Dates are setup - Friday, September 13<sup>th</sup>, Saturday 14 & Sunday 15. Garden treasures will be accepted. Stay tuned about digging plants.

**Garden Walk:** (Chris G) Preliminary figures for results were presented. Final expenses and costs will be shared at a later time. Members felt that we had a very successful day.

**Plant stakes** – Diane and Jim Nichols shared information from stakes they have from Rapid Sign Co. The BOD will discuss prices and Chris will share collected information about current needs at August 12 meeting. A decision will be made so we can apply for the WIMGA grant by Oct 1.

**Socialization:** Thursday, August 15 – 4:00 - Hancock Research Station Open House/Hay Ride (approx 1 hour) followed by Dinner at Two Lakes about 6:30.

**New Business:** Nominating Committee: These positions are needed for 2025: Vice-President (also heads up program committee) one year term; Secretary – one year term; Two Director-at-Large positions will open, one from each end of the County. They are two year terms, but we are looking to recruit people for one year terms this time, so future terms will be staggered. Famia will continue as treasurer. Carolyn Schulein will continue as North Director. Contact Chris if you are willing to take a Director position or be on the Nominating Committee. Work begins for this in September.

**Project Spotlight:** Marshfield Fairgrounds Garden – Jill, Rita Meier, and Joyce Fischer work on this project. Jill discussed some of the history and current practice. The garden is divided into 11 different educational themes.

**August Picnic Set up:** Karen Shirek and Audrey B volunteered to be on set up committee. Karen will donate Nesco roaster – Menu: Fried Chicken – Everyone bring a dish to pass. Chris will arrange for chicken and will secure tableware. Karleen will look into the facility charge if we decide we want access to the concession building.

**Adjournment:** M/S/P to adjourn at 8:25 PM.

**Next Meeting:** Tuesday, August 27 - 6:00 Picnic! Vesper Rec Center

Respectfully submitted,  
Judy Miller, Secretary

# August Meeting Information

**WCMG Annual Picnic**  
**Vesper Recreation Center**  
**6435 Cameron Street (Hwy C/HH)**  
**Vesper**  
**6-8 PM, August 27, 2024**  
**In person only**



We will meet for our annual picnic at Vesper Recreation Center, 6435 Cameron Street in Vesper. As a guide, look for the Vesper water tower near the intersection of County C & Hwy 186. We will utilize the covered shelter and picnic tables next to the fenced in softball field. If you prefer, bring your own seating. Parking is in the lot next to the shelter. We will be using an outdoor shelter. Come prepared for weather & mosquitos.

WCMG will provide chicken, plates, napkins and eating utensils. Bottled water will also be available. **Each attending family (spouses and friends invited) is asked to bring a picnic potluck dish to share as well as your own beverage if you prefer something other than water. At this time we are unsure of the availability of electricity if you bring hot food. More on that at a later date.** RSVP to Chris Grimes by Sunday, August 25 so we have enough chicken.

The program will consist of Central Wisconsin horticultural experts.....that's you!.....sharing experiences and lessons learned from the 2024 gardening season. It's called **Sizzles and Fizzles**. An informational guide to the program will be forwarded to you via e-mail closer to August 27th. Be on the lookout.



## Our Next Road Trip

Thursday, August 15  
**Hancock Ag Research Station**  
N3909 County Rd V Hancock  
for their  
**2024 Open House and Tour**  
followed by  
**Dinner at Two Lakes Supper Club**  
9915 2 Lakes Rd, Almond

The Open House is 4-7pm with themed displays including a miniature garden, vegetable and herb garden, children's area and many other new additions. The event will include a wagon tour of the station where you can learn more about their research projects and activities. Guided tours qualify as continuing education.

We can plan on meeting there at 4pm and then move on to dinner at 6:30 or so. **RSVP for dinner to Chris Grimes by Tuesday, August 13.** Car Pool available from Wisconsin Rapids. Spouses and friends are welcome to join us!

# Education Opportunities for C. E. Hours

## **UW Extension Horticulture** [Wisconsin Horticulture – Division of Extension](#)

**Planning for Fall Planting: Choosing the Right Trees and Shrubs for Success** Wednesday, August 7, 12-12:30 p.m.

Did you know fall is a great time to plant a tree? Learn why (hint: it's all about the roots) and what species are best suited for fall planting. You'll also hear about important factors to consider when picking a tree species and nursery stock- and whether or not those fall clearance sale plants are a good buy!

[Webinar Registration - Zoom](#)

**Tree Planting 101: Setting Trees Up for Success** Tuesday, August 13, 2024, 12 – 12:30PM

Learn why proper planting techniques are crucial for tree health and longevity, including common pitfalls. Discover the five essential steps to planting a tree successfully to ensure your trees thrive for years to come.

**From the Plant Disease Diagnostic Clinic** The Clinic will sponsor a Zoom presentation on a plant disease-related topic each month. To register for one or more talks, go to [2024 PDDC Monthly Disease Talk Registration Form | Plant Disease Diagnostics Clinic \(wisc.edu\)](#)

**Hosta Diseases** August 28, 6:30 – 8:30 pm

Learn about common diseases of hostas. This presentation will include information on how to identify these diseases, as well as information on how to manage them.

**Ask the Experts 1-2pm Select Mondays**

Join our monthly online programs in 2024 for an opportunity to connect with plant health experts from the UW-Madison Division of Extension. Each session, held on Monday afternoons from 1:00-2:00 pm, is your chance to ask questions about your trees and shrubs, garden vegetables and ornamentals, and lawns. August 19 registration link: [Webinar Registration - Zoom](#)

## **Janell's Local Programs**

**Resilient gardening: Connecting good gardening practices in extreme weather**

We will talk about general predictions for Wisconsin climate, including wetter winters and more periods of drought throughout the growing season. Learn how gardening strategies like "right plant, right place" and composting help adapt to and mitigate the effects of extreme weather.

Marathon Co. PL Wausau branch August 13 10-11am or 6-7pm [Extension Gardening: Resilient Gardening for Extreme Weather \(google.com\)](#) Also at Woodson YMCA-The Landing August 21 1-2pm

**Fall Lawn Care** August 21 5:30-6:30pm Marathon City Library

Fall is the most important time of the year for lawn maintenance. Join us in Marathon City for a free program on ways to keep your lawn healthy the rest of the year!

In this program, we will cover choosing the right species for overseeding or reseed lawns, and will discuss best practices around mowing, aeration, fertilizers, and herbicides.



All events will be led by Master Gardener Educators & take place at the Lester Public Library of Rome

# ROME GARDEN CLUB 2024 EVENTS



**APRIL 24TH, 2024**  
**9:30-11AM**

## **CUTTING BACK & DIVIDING NATIVE GRASSES**

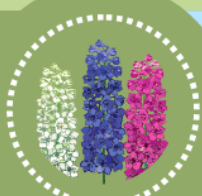
Discussion | Hands-On



**MAY 8TH, 2024**  
**9:30-11:30AM**

## **SUSTAINABLE LANDSCAPE DESIGN**

Discussion | Led by Becky Gutzman, Retired UW-Extension Educator



**JUNE 12TH, 2024**  
**9:30-11AM**

## **DIVIDING & SHARING PERENNIALS**

Discussion | Group Share | Hands-On | Led by Jennifer Fane



**JULY 10TH, 2024**  
**9:30-11:30AM**

## **MAKE & TAKE STEPPING STONES**

Hands-On | Registration Required | Led by Laurie Francis & Robert Stoldt



**AUG. 14TH, 2024**  
**9:30-11AM**

## **NATIVE SHADE PLANTS**

Discussion | Led by Barb Herreid



**SEPT. 11TH, 2024**  
**9:30-11:30AM**

## **LAWN CARE FOR SANDY SOILS**

Presentation | Discussion | Led by Janelle Wehr, UW-Extension Educator



**OCT. 9TH, 2024**  
**9:30-11AM**

## **GROWING GARLIC & WALKING ONIONS**

Discussion | Hands-On | Registration Required | Led by Jennifer Fane



# Villainous Vegetable Violations

In last month's web article, I talked about the myriad of fruit diseases that I've been seeing at the clinic. This month, I thought I'd provide a summary of the vegetable diseases that I've been seeing. Many of the vegetable samples that I've received have been from commercial growers, but diseases don't discriminate and can affect both commercial- and home-grown vegetables alike.

## Root/Crown rots

Given our regular (and often plentiful) rains this year (it's pouring as I write this article), it's not surprising that vegetable root and crown rots have been an issue. I have seen these diseases on peas, snap beans, and vine crops thus far this season. Typical symptoms of root/crown rots can include stunted growth, leaf yellowing and browning (caused by inhibited water and nutrient uptake), and discolored and mushy roots. The menagerie of organisms that I've recovered from root/crown rotted plants has been quite impressive. I've seen pathogens such as *Phytophthora*, *Aphanomyces*, and *Pythium* (all fungi-like water molds), as well as *Rhizoctonia* and *Fusarium* (two true fungi). Management of root rots in home gardens relies heavily on proper crop rotation, [i.e., making sure not to grow the same vegetable (or even vegetables in the same plant family) in the same area of your garden year after year after year]. This technique helps prevent the buildup of root/crown rot pathogens in the soil (where they tend to survive quite happily). In particular, water molds produce thick-walled, long-lived resting spores (called oospores) that can survive for years in the soil. For details on how to use crop rotation effectively in your home vegetable garden, check out the fact sheet here.

## Black rot

This disease of cruciferous crops (e.g., cabbage, broccoli, cauliflower, kale) seems to have exploded. I have had four cabbage samples with this disease show up at the clinic in the past week. Symptoms of black rot often start at the edges of leaves with yellowing that progresses into wedge-shaped necrotic (i.e., dead) areas with yellow borders. The points of the wedge-shaped diseased areas usually follow veins. This disease can be very destructive and lead to substantial losses in commercial vegetable production. The bacterium that causes this disease (*Xanthomonas campestris* pv. *campestris*) is typically introduced into a garden on contaminated seed or transplants. Once the disease has occurred in a garden, the bacterium can survive in small bits of debris from infected plants that filter into the soil. Crop rotation is a useful technique for managing this disease. In addition, make sure you plant high-quality seeds that are less likely to harbor the bacterium. If you have seed that you suspect may carry this pathogen, there are hot-water treatments that you can use to decontaminate the seed.

Interestingly, in 2024, I have seen a large number of *Xanthomonas* diseases (aside from black rot) on a wide range of plants including lettuce, tomato, pepper, begonia, zinnia, hydrangea, amur honeysuckle, peach, and winter wheat. This bacterial genus contains many common and destructive

plant pathogens.

## Verticillium wilt

I have only seen a single vegetable example of this disease so far this season (on melon), but Verticillium wilt affects a wide range of vegetable crops including tomato, potato, pepper, eggplant, and vine crops such as cucumber, melon, squash, and pumpkin. The fungus involved (typically *Verticillium dahliae*) survives readily in soil or associated with other plants (e.g., broad-leaved weeds) and infects susceptible vegetable plants through roots. It then colonizes the xylem (i.e., the water-conducting tissue) in the plants and blocks it, preventing water flow from the roots to the aboveground plant parts. This results in wilting and eventual plant death. Use of nonsusceptible vegetables (e.g., corn, peas, snap beans) and use of Verticillium wilt-resistant varieties of susceptible vegetables (e.g., tomatoes) are common means of managing this disease.

Verticillium wilt is not only a vegetable disease, but it can also be a serious problem on woody and herbaceous ornamentals. So far in 2024, I have diagnosed this disease on Japanese maple (a very common host), catalpa (another common host), gas plant, and buttonbush. My buttonbush detection this year is only the second time in my 26+ year career that I have seen Verticillium wilt on this host. And, I have never seen the disease on gas plant before.

## Powdery Mildews

As with Verticillium wilt, I have only seen a single case of vegetable powdery mildew this year, and that was on cucumber. I have also seen limited powdery mildew on other non-vegetable plants this year, with detections only on pear, serviceberry, and delphinium. Part of the reason I've likely not seen a lot of powdery mildew samples in the clinic is that many people are familiar with these diseases. They readily recognize the powdery white growth associated with powdery mildews and don't need my help with an ID. In addition however, we've had a very wet growing season in 2024. Powdery mildew fungi don't perform well when there is a lot of rain and leaves are wet. These fungi prefer dry leaves and high humidity. Limited rain and muggy conditions (which favor powdery mildews) are typical in Wisconsin in July and August, but not so much in 2024. We've had regular rains this year, so powdery mildew infections have been suppressed.

Interestingly, in one of the powdery mildew samples that I received, I found *Ampelomyces*, a fungus that parasitizes powdery mildew fungi. *Ampelomyces* provides natural biological control of these diseases. Interestingly, this fungus has been commercialized and is the active ingredient in certain fungicides that are used for powdery mildew control.

What vegetable diseases are you seeing in your garden?

If you find something interesting and need help in identifying the problem, please contact me at (608) 262-2863 or [pddc@wisc.edu](mailto:pddc@wisc.edu) for advice. As always, for more information on plant diseases and their management, be sure to check out the [UW-Madison PDDC website](#). To keep up to date on clinic activities and resources, follow the PDDC on Facebook or Twitter (@UWPDDC), or subscribe to the clinic's listserv, UWPDDCLearn (by emailing or phoning the clinic to subscribe).

Either of the below courses are available to anyone seeking more information about successful growing practices. Those seeking Master Gardener certification need to complete the Onboarding course which includes an open book exam.

## **Sowing Success: Evidence Based Gardening Essentials**

Learn about growing plants in a way that helps you plan for gardening success, prevent plant problems before they start, and manage issues when they happen. You'll leave the course with a combination of practical gardening skills to try plus the knowledge of why they work. At the end of the course, you'll be able to:

- Link gardening practices and biology to preventing plant problems.
- Explain how to select, grow, and maintain the health of different kinds of plants.
- Identify strategies to manage plant problems.
- Explain what Integrated Pest Management is and how it benefits you and the environment.

You'll work the assigned readings and video lectures hosted on YouTube prior to the weekly sessions. At the in person meetings, you'll have an opportunity to work through hands-on activities designed to reinforce the concepts introduced in the course materials. You'll learn about:

- General Gardening Practices -Integrated Pest Management
- Soils
- Botany
- Insects
- Plant Diseases
- Wildlife -Weeds
- Herbaceous & Woody Ornamentals
- Fruits
- Vegetables
- Lawns

Sowing success! Evidence-based gardening essentials is open to everyone! This course is considered an approved learning opportunity for the Wisconsin Extension Master Gardener Program in preparation to become a Wisconsin Extension Master Gardener. Visit the Wisconsin Master Gardener Website for more information.

Register here: <https://bit.ly/MCSowingSuccess>

An EEO/AA employer, Extension provides equal opportunities in employment and programming, including Title VI, Title IX, and the Americans with Disabilities Act (ADA) requirements and Section 504 of the Rehabilitation Act requirements.

## **Foundations in Gardening**

This is a 14 week online course by UW-Horticulture. Early Bird pricing until August 12 is \$299, including electronic version of the manual.. Need-based scholarships also available until August 12. After August 12 until August 29, fee is \$325, including electronic version of the manual. Hard copies of the manual are \$33. Online labs \$40. Course runs from September 8 to December 7.



# Project Spotlight of the Month



## Marshfield Fairgrounds

### Educational Garden

The fairground is a place of buildings, RV camping park, a dirt track, softball diamonds and patches of concrete and gravel. The garden's color and green plants stand out like an oasis in a barren area. Well defined walking paths within allow visitors to get close to the plants and help establish the boundaries of the eleven themed gardens. This area is a nice place to rest with benches in the

centralized gazebo and by some of the beds. The gazebo and nearby crabapple trees provide shade. The trees and plants also invite birds and butterflies to frequent the beds. Plant selection and care keep the beds alive with continuous blooms. Everywhere you look are plants of varying heights, texture and color.

These gardens were created in 2001-2002 with the help of donations from the public and businesses and the coordination of different organizations. Marshfield Park and Recreation owns the land. This project was headed by Joy Close, lead master gardener of the Wood County Master Gardener Association and the Fairgrounds Committee head, Harry Nienaber. Joyce Fischer and Roger Schalow designed the gardens. The Bette Adler family donated funds for the gazebo which was designed by Ron Meyers. In 2002, Clyde Wynia donated a large steel pot that is planted with annuals. Wood County Master Gardeners planted and maintain these gardens.

The gardens have changed through the years when plants needed replacing or new plants on the market were added for more interest. The gardens are for the public to view and educate themselves on garden design. Frequently, when working in the gardens, visitors tell us how beautiful they are.

The success of the beds with their plants of varying heights, textures and colors are because of the mentoring and hard work that Joyce Fischer has provided over twenty some years. In the last five years, all of Joyce's helpers, friend Tina S. and fellow master gardeners Peg H., Joy M., Catherine G., Rita M. and I are impressed with and benefited from Joyce's extensive knowledge in all matters of gardening. She knows when and how to trim/cut back the plants in order for different ones to bloom again or look their best at fair time.

My favorite memories have been of Pegs jokes, the sharing of stories, and the building of friendships.

—Jill Becker

Coneflowers, Liatris, Joe Pye, Hydrangeas, Batista, Rattlesnake, Prairie smoke Roses, Bugbane, Catmint, Hibiscus, Butterfly weed, Lungwort, Annuals, etc.



# Project Updates

WCMG Newsletter July



## Garden Walk 2024 – One For the Books!

**With over 300 attendees & an income exceeding our expectations, this is how we spell SUCCESS:**

- S **sunny weather** – July 19<sup>th</sup> (pre-walk) and 20<sup>th</sup> were perfect sunny days. God is good!
- U **unique gardens** – Visitors commented on the uniqueness of the gardens selected and loved them all. Garden owners, artists, musicians and vendors established friendships early in the planning and worked together to provide a memorable experience for all.
- C **careful planning** – My thanks to a team that was willing to start planning early and volunteer to “own” tasks and run with them. We worked hard, but had so much fun!
- C **considerate** extended friendships – With WCMG numbers down, we asked for help from friends & family. They delivered and helped us meet our goals. We are grateful.
- E **energy** – this group of ladies delivered and exceeded expectations! Garden labels, social gatherings, diverse advertising, signage, education, a raffle & silent auction, mentoring garden hosts, and creating beautiful host gifts.
- S **steadfastness** – we were determined and stayed on course. Sponsorships supported expenses, attendance was excellent-, garden owners delivered! Did I mention it was fun?
- S **super talented team** – as the “task master” I cannot thank my team enough for their hard work & support . . . on top of home commitments & other volunteer involvements, You are the reason for our success.

Hats off to my team (in no particular order): Deb Rokke, Jan Myers, Cathy Schutz, Terrie Brown, Barb Herreid, Kay Paulson, Chris Grimes, Diane & Jim Nickel, Bea Kohl, Micky Erickson, Famia Marx, Donna Streiff, Judy Miller, Karlene Remington & Karli Tomsyck (UW Extension Office)

# Project Updates

## Central Wisconsin State Fair



Please add to your calendar, CWSF Aug 20<sup>th</sup> to 25<sup>th</sup>. Two members per shift. Receive one day - free gate pass and help with parking on the grounds. Resource information on site. Set-up is August 19th. Booth shifts 3.5 hours 11a-2:30pm or 2:30p-6pm, you can ask for a longer shift. Tell Bea or Jill what shift you would like while it is still available.

## SIGN-UP SHEET

WOOD COUNTY MASTER GARDENER VOLUNTEER ASK A MASTER GARDENER - BOOTH  
CENTRAL WI STATE FAIR Tuesday, AUGUST 20nd TO Sunday, AUGUST 25th, 2024

Sign up for one or more 3.5-hour time slots. You will receive a free pass for the whole day to attend the fair. Two members staff the booth with supporting "Ask a Master Gardener" materials. You have permission to open earlier or stay later. We will have one parking pass to share during the week.

Tues, August 20th 11-2:30 pm –Ann R, Shelby W., Janell W. 2:30-6pm-Chris G, Micky E.

Weds, August 21st 11-2:30 pm Bea K., Terri B. 2:30-6pm Bea K., Jim and Diane N.

Thurs, August 22nd 11-2:30 pm Jan M., Audrey B. 2:30-6pm Sally S. Micky E.

Fri, August 23rd 11-2:30pm Deb R., Shelby W., Janell W. 2:30- 6pm Rita M. **1 NEEDED**

Sat, August 24th 11-2:30 pm Rita M. **1NEEDED** 2:30-6pm **2 NEEDED**

Sun, August 25th 11-2:30 pm 2:30-6pm Bea K., Famia M. 11-2:30pm 2:30- 6pm Bea K., Jill B.

Please write yourself a note with the date and time you have selected to help.

Thanks Bea Kohl 715 423-8908

Notes: Bea, Karleen and Jill will fill in as needed.

## Important Note from the Extension Office

If you are on a committee, project, or team that needs printing done at the Extension Office at the Wood County Courthouse, be aware of the following requirements

- Submit your printing needs to Karli at least one week in advance of when you need them. You can take them to the courthouse in person or send by email. [karli.tomsyck@woodcountywi.gov](mailto:karli.tomsyck@woodcountywi.gov)>
- You might want to call Karli in advance at 715-421-8440 to coordinate your needs and her availability.
- Karli works on [Tuesday](#), [Thursday](#), and [Friday](#) (but only until 2pm)

You can pick up your printed copies on any day, even if Karli is not working. Another staff person can help you.

# Project Updates

## Fall Plant Sale

Elements of a successful Fall Plant Sale the weekend of Sept 14th and 15<sup>th</sup>, 2024

For new members: The fall plant sale is a two-day sale during Marshfield's Maple Fall Fest, at Wildwood Park in Marshfield. The park is at 1800 S. Roddis Ave and also along west 17<sup>th</sup> Street. Over 10,000 visitors attend this 150 plus vendor festival. Hopefully, I can again obtain a few reserve parking tickets at the Vandehey Water Park across the street on Roddis because close parking is at a premium. Because of this we need individuals to provide walking wagon transportation service for our purchased products to customers cars parked many blocks away.

The rest of this article covers: What we sell, remaining pre, post and sale day tasks, personnel staffing requirements; i.e. sign-up sheet. Followed by Plant Buzz reminders.

Note: Volunteer hours you spend gathering and preparing donations, logistical/administration support, and sale hours are counted under category -Administration and sub-activity - Fundraising.

**What we sell** - Bulbs/Rhizomes, Houseplants, Natives, Perennials, Seeds, Succulents or Vegetables. Info - Succulents sell at a higher price if in a nice container. Will sell self-harvested and store-bought viable seed packets. All plants and certain bulbs have to be potted up in potting soil. i.e. prevents possible transfer of jumping worms and their cocoons. Non-plant items: Those sale products that are gardening/nature related: Accessories, Art, Bird/Butterfly related, Books/Magazines, Colored Bottles, Décor, CLEAN Pots, Seed Starting Supplies, Tools, & Yard items. (Must still have value & useable life. Plus, print information must be recent and from a viable resource).

### **Pre-sale tasks we still need help with:**

Article write-up for the three local weekly papers. (Can modify the same article)

Continue to get the word out, by using various media – posting, conversations, save the date flyer, etc.

Pick out and purchase perennials for re-sale. Micky and Chris have offered.

See the first paragraph of the sign-up sheet for more pre-sale tasks.

Week of sale 1-2 people to put out plant sale street signs Sept 6-8<sup>th</sup> Jill B & \_\_\_\_\_

Drop off sites: Marshfield – Jill B    Nekoosa – \_\_\_\_\_ WI Rapids – \_\_\_\_\_

Evening of the 12<sup>th</sup>: SWCHM, WI Rapids by 6pm. Transportation handled by \_\_\_\_\_

**Fall plant sale personnel needs each day.**    \* Depends on qty of plants and categories

Set-up:            12 to 15 people.                      Clean-up:        9 to 12 people.

Total personnel needed per sale day:    13 to 19 people

Thank you for your continued support.

## 2024 Fall Plant Sale SIGN-UP SHEET - Sept 13th, 14th & 15th as of July 25th

Week of sale 1-2 people to pick-up purchased plants from supplier \_\_\_\_\_

Week of sale 1-2 people to pick-up and return equipment from Rudolph to Marshfield \_\_\_\_\_

Thursday/Friday 1-2 people to transport donation products from southern part of county \_\_\_\_\_

Friday **Set Up Sept 13<sup>th</sup>** Start **9am** to finish late afternoon (staff needed-- 12-15)

We need multiple people per task. Add your name & if preferred tasks (A – H) to do: ALSO, if you can either Help All Day, Help in the morning or afternoon

TO Do's List:	Name	Task	What time can Help
A. Set up tables, tents, booth, check out ...			
B. Unload items & move to their locations			
C. Arrange <u>plants</u> & non-plant décor			
D. Price sale items			
E. Place signage, Educ displays, supplies			
F. Create dry arrangements etc.			
G. Cover products for the evening			
H. Conduct tally of plants			

Sat. **Sale Day 14th Saturday** Add your name, if preferred tasks (A-I) to do. Plus, when you can help. Staff needed 13-19 Help either All Day / Morning 8:30 to 12:30 / Afternoon 12:30 to 5pm

TO Do's List	Name	Task	What time can Help
A. Uncover products & ready area--all			
B. Make dry arrangements 2-3			
C. Assistance guest with purchases 4-7			
D. Staff - Ask the Master Gardener booth 1-2			
E. Transport Plants for customers 1-2			
F. Two members on the cash box 2			
G. Keep area picked up--all			
H. Cover products for the evening--all			
I. Conduct tally of plants/products 2-3			
J * Possible new role Greeter – welcome, hands out business card & other info.			

Sun. **Sale Day 15th Sunday** Add your name, if preferred tasks (A-H). Plus, when you can help. Staff 13-19 Help either All Day / Morning 7:30 to noon / Afternoon noon to 4pm

TO Do's List:	Name	Task	What time can Help
A. Uncover products & ready area <u>all</u>			
B. Assistance guest with purchases 4-7			
C. Make dry arrangements 2-3			
D. Update Prices and signage. 2-3			
E. Move products & consolidate 4-7			
F. Staff - Ask the Master Gardener booth 1-2			
G. Transport Plants for customers 1-2			
H. Two members on the cash box2			
I. Keep area picked up all			
J. Conduct tally of plants 2-3			





# Project Updates

## PLANT BUZZ AUGUST 2024

**Mark September 14 & 15 on your calendars for the WCMGV fall plant sale. Set up on the 13<sup>th</sup>.**



- Sign up for a few hours to help with sale set up, staffing the two-day sale or clean up.
- Setup: September 13<sup>th</sup> – Friday 9am till done. Personnel needs 12-15
- Staff for Sale: September 14<sup>th</sup> & 15<sup>th</sup> weekend. Personnel needs 13-19
- Take-down: September 15<sup>th</sup> after 4 pm. Personnel needs 9-12
  - Pot up a few indoor plant shoots for the sale and let them grow to an appealing size
- Create a small succulent dish garden from your overgrown succulents
- Use a good quality commercial potting soil
- Label plants using the WCMGV designed labels
- E-mail to Jill ([jb5mfld15@gmail.com](mailto:jb5mfld15@gmail.com)) a list of your plants, bulbs, seeds, dry materials, garden treasures - art/decor/tools, etc. SOON!! **Helps with sale signage, staffing and having enough sale tables.**

**Winter sowing update:** Especially for newbie growers!

- If you are growing mostly shade plants, move them to a shady location if weather suddenly turns hot. Shade loving plants should be grown in a shaded area anyway.
- Protect from jumping worms by placing on a tarp on the ground under the plants or setting them above the ground on a piece of wood or a rack.
- If plants are growing thickly, take a chunk of them and transplant, then CUT off extras after they are established, rather than trying to separate them.
- Repot your winter-sown native plants if any are overgrown
- Mulch them to keep from drying out
- Water regularly
- E-mail a list of your plants to Donna ([streiffonclay@tds.net](mailto:streiffonclay@tds.net)) SOON!! **She creates a poster of natives.**
- **Continue watching for and collecting mature seeds** to package for sale at Maple Fall Fest
  - Monarda
  - Woodland Rye
  - Purple Lovegrass
  - Downy Phlox
  - False Sunflower (ox-eye)
  - Indian Paintbrush
- **Collect** any of the following during August from your garden or your neighbors' gardens. **Dry them for fall bouquets** (a major money-maker at the sale) Your quantity of materials collected does not matter. Every little bit counts!

Liatris	Curly willow branches	Clover flowers
Stems of lavender	Amaranthus	Everlastings/Straw flowers
Pampas grass	Hyssop	Penstemon
Rose hips	Iris seed heads	Poppy seed heads
Bachelor buttons	Statice	Sage
Celosia	Artemesia	Tall marigolds
Globe amaranth	Sea holly	Hydrangeas of any kind
Blackberry lily	Cone flowers	Goldenrod (not yet gone to seed)
Ox-Eyed daisy seeds	Chinese lanterns	Boneset (not too mature)
Baptisia seed pods	Black-eyed Susan seed heads	Joe Pye Weed (not too mature)
Wheat & oats sheaves, ornamental millet	Grasses, wild and domestic, not yet dropping seeds	

## WIMGA Corner

**WIMGA Corner** by Karleen Remington

WIMGA, like the rest of us, is busy gardening while the sun shines and the weather is warm. So there is not much to report this month. However, the WIMGA Continuing Education Committee is setting up programs that foster our horticultural growth and support the requirement of 10 education hours to maintain Master Gardener certification. Watch for programs on **Growing Herbs** in September and **Shade Plants** in October.

Remember, again, to look for opportunities to enhance your projects or our activities with an education component that might be helped with the support of a WIMGA grant. Application deadline is October 1<sup>st</sup>. Allow yourself plenty of time to put together the necessary information to support your application. Chris or I can help you with that.

Thanks to Diane and Jim Nickel who are in the process of researching costs, materials and information texts for educational signage at each of the current WCMG projects. This signage project would build upon a similar plan from over a decade ago. Most of those projects no longer exist and the signage has faded creating a sad image. They will have additional information to share with us at the August meeting as well as tell us the size of the grant request they will be making to WIMGA.

# Calendar of Events

**Aug 15 Hancock Ag Station Tour and dining out after\***

**Aug 20-25 CWSF\***

**Aug 27 Membership Meeting at Vesper Park 6pm\***

**Sept 7 Clean Sweep Saratoga Town Hall and Garage 8am-noon\*\***

**Sept 14-15 Fall Plant Sale (setup Sept 13)\***

**Sept 24 Membership Meeting**

\* See related articles in this newsletter for details

\*\*For more detail, go to [Environmental Health - Disposal - Wood County Wisconsin](#)

\*\*\*See help needed below the Calendar of Events

## Project Help Needed

The following organizations in the ORS host MG projects that would welcome help in 2024. Please refer to the member roster in the **Members Only** section of our website for project leader contact information.

**Edgewater Sensory Garden:** Port Edwards. Workdays generally Monday mornings, starting about 9am, as well as other times as needed.

# August Garden Guide

Taken from Melinda Myers website



- August is usually the hottest, driest month of the summer. Check all plantings for moisture stress. New plantings and moisture-loving plants are your highest priority.
- Consider using a watering wand or drip irrigation system to water the soil without wetting the foliage. Always water thoroughly to encourage deep, more drought tolerant roots.
- Fertilize container plantings in need of a nutrient boost.
- Monitor gardens for brown leaf edges, a symptom of scorch. Pay special attention to hostas and other shade lovers growing in the sun. Water is not always the solution.

- Watch for heat stall in the gar-

den. Alyssum, lobelia, snapdragons, pinks and French marigolds are a few annuals that stop flowering during extremely hot weather.

- Plan on replacing weatherworn annuals with fall and winter (for those in milder climates) bedding plants. Purchase pansies, kale and other cool season annuals to spruce up the garden
- Deadhead annuals for continual bloom and beauty. Pinch back leggy annuals to encourage branching and more flowers.
- Deadhead late season perennials for aesthetic reasons and to prevent unwanted reseeding.
- Plant autumn crocus and surprise lilies now through early September or as soon as the bulbs are available.
- Southern gardeners can sow seeds of fast growing annuals like marigolds and zinnias or cool season annuals like calendula, snapdragons and stocks for the fall and winter garden, if your weather allows.
- As temperatures cool, you can begin digging and dividing any overgrown and crowded iris and other spring-blooming perennials.
- Replenish mulch around flowers. Maintain a 1- to 2-inch layer of organic mulch, but do not bury the crowns of the plants.
- Do not fertilize your perennials. Late season fertilization encourages late season growth susceptible to winter damage.
- Northern gardeners should try cutting back short-lived perennials, such as blanket flower (Gaillardia) and pincushion flower (Scabiosa). This eliminates late season blooms, but increases winter hardiness.
- Take cuttings of annual vinca, geranium, coleus and other annuals for a little added color indoors over winter.
- Keep pulling weeds and removing insects and diseased leaves as soon as they are discovered. Do not compost pest-infected plant material, perennials or annual weeds that have gone to seed.
- Check the upper and lower leaf surfaces and stems of plants for aphids and mites. These pests suck out plant juices, causing leaves to yellow and brown.
- Capture and destroy slugs eating holes in the leaves of hostas and other shade lovers.
- Continue to remove and destroy Japanese beetles if control is desired.
- Remove aster yellows-infected plants to reduce the spread and future infections. Infested plants have green petals, distorted leaves and misshapen flowers.
- Check zinnias, begonias, bee balm, phlox and other flowers for powdery mildew. Clean up mildew plant debris this fall and consider replacing susceptible plants with mildew-resistant varieties.
- Deer and rabbits continue to feed on garden plants. Repellents, fences and scare tactics may provide some relief.



## 2024 WCMGV BOARD OF DIRECTORS

**President—Chris Grimes**  
715-424-2878

**Vice President—OPEN**

**Secretary—Judy Miller**  
715-572-4798

**Treasurer—Famia Marx**  
715-652-2405

**Director—Jill Becker**  
715-387-8040

**Director—Lil Schotten**  
715-213-7672

**Director—Bea Kohl**  
715-423-8908

**Director—Carolyn Schulein**  
715-389-9027

**Communications Rep.—**  
**Chris Grimes**  
715-424-2878

**WIMGA Rep—**  
**Karleen Remington**  
715-387-1863

**Newsletter Editor—Donna**  
**Streiff**  
715-207-6218

**Wood County Extension Horticultural Agent**  
**Janell Wehr** [janell.wehr@wisc.edu](mailto:janell.wehr@wisc.edu)

The Wood County Master Gardener Association is a non-profit organization with a mission to educate and share information with its members and the community alike. In addition, it is our charge to promote the UW Extension from which we are founded. We are a diverse group interested in the latest research-based horticultural information.

### Future Article Submissions

Please send items for inclusion in the newsletter by the 25th of the previous month to: [streiffonclay@tds.net](mailto:streiffonclay@tds.net)

**Wisconsin Master Gardener Website:**

<https://mastergardener.extension.wisc.edu/>

**Wood County Extension Website:**

<https://wood.extension.wisc.edu/>

**Wood County Master Gardener Association Website:**

<https://wood-county-master-gardeners.org/>

**WIMGA Website:**  
<https://www.wimga.org>

### Reminders

- If you need continuing education hours, see page 4-7.
- Continue care of winter sown plants.
- Volunteer to work on one of our major projects—Plant Sale, CWSF.
- Collect and dry material for dried arrangements for fall plant sale.
- **VERY IMPORTANT NOTE: DO THIS SOON!!**
- **Let Donna know of any native plants you are bringing to the plant sale.**
- **Let Jill know what else you are planning to bring to the plant sale.**